



ALL EYES ON ME

2964 PEACHTREE ROAD ATLANTA

Restaurant & terrace
space in the heart of
BUCKHEAD



HEALEY
WEATHERHOLTZ
PROPERTIES

Incomparable visibility



2964 Peachtree Road is located on a strategic stretch of Atlanta's iconic street adjacent to Buckhead Village and heritage restaurants in the epicenter of the South's legendary shopping and financial district.

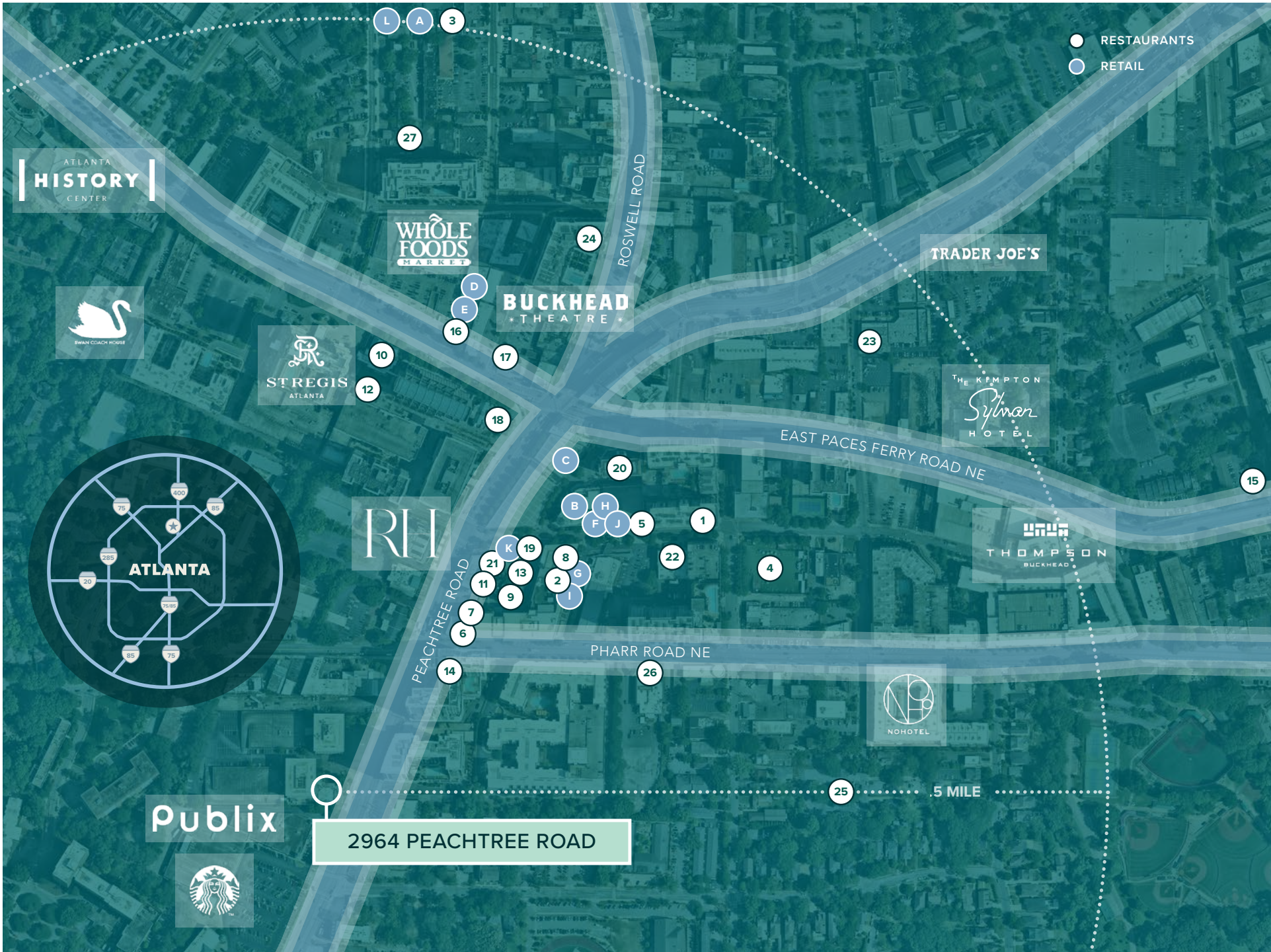
Tree-lined avenues create a walkable district of over 3,000 hotel rooms, 16 million square feet of office space, and 3 million square feet of shopping surrounded by the South's most affluent neighborhoods.



Buckhead

According to *Forbes Magazine*, Buckhead is home to the 9th wealthiest zip code in the nation (30327), with a **household income in excess of \$341,000 per year.**

The *Robb Report* magazine has consistently ranked Buckhead one of the nation's **“10 Top Affluent Communities.”**



NOTEWORTHY BUCKHEAD BRANDS

within walking distance

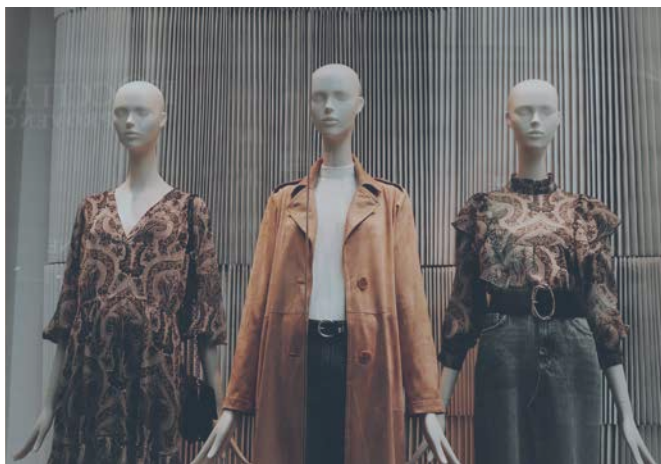
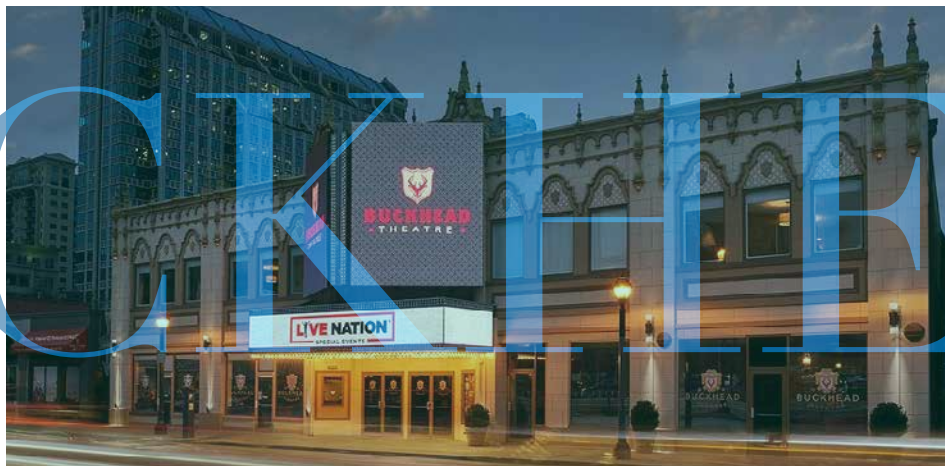
RESTAURANTS

- | | | | | | | | |
|----|--|-----|---|-----|--|-----|---|
| 1. |  | 8. | <i>Le Colonial</i> | 15. | a r i a | 22. |  |
| 2. | PLANTA | 9. |  | 16. |  | 23. |  |
| 3. | yebo.
<small>BLACK HANG</small> | 10. |  | 17. | THE SALTY | 24. | <i>The</i> IBERIAN PIG |
| 4. |  | 11. | SHAKE  SHACK | 18. | <i>delbar</i>
<small>MIDDLE EASTERN</small> | 25. | <i>Anis</i>
<small>Café & Pastries</small> |
| 5. | TAVERNA | 12. | umi | 19. |  | 26. |  |
| 6. | <i>Carmel</i> | 13. | <i>Le Bilboquet</i> | 20. |  | 27. | DANCING GOATS COFFEE |
| 7. |  | 14. | LUCIAN
<small>BOOKS AND WINE</small> | 21. |  | | |

RETAIL

- | | | | | | | | |
|----|---|----|---|----|---------------|----|---------------------|
| A. |  | D. | VAN MICHAEL SALON | G. | BILLY REID | J. | WARBY PARKER |
| B. |  | E. | bluemercury | H. | jenni kayne | K. | VERONICA BEARD |
| C. | DIOR | F. | alice + olivia
<small>BY STACEY BENDET</small> | I. | Theory | L. | patagonia |

BUCKHEAD



PRIME FRONTAGE ALONG

*Peachtree Road, traveled by
50,200 vehicles per day.*





The Opportunity

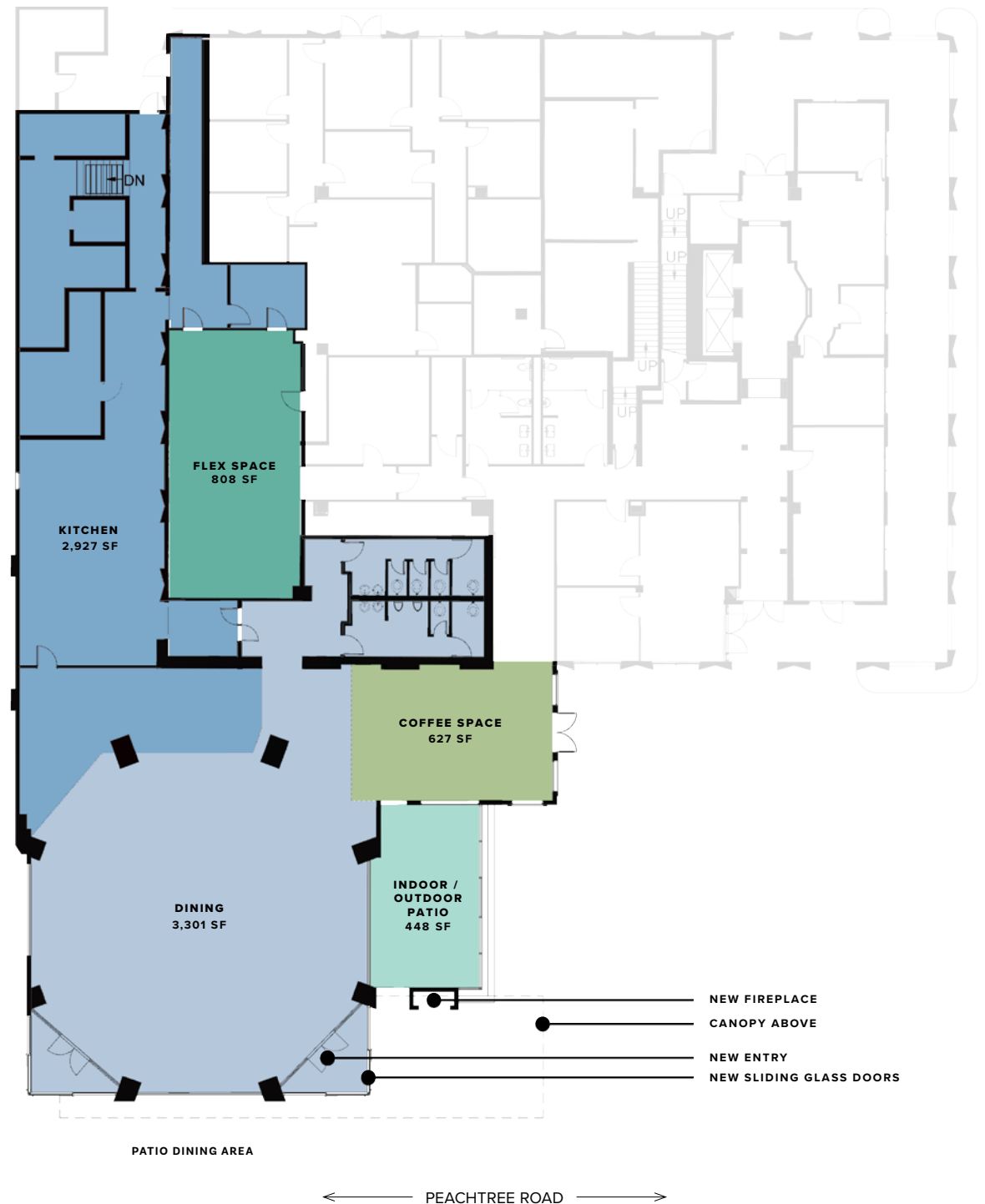
6,228 sf of 2nd generation restaurant space, with large outdoor patio space.

Ability to expand the square footage by adding 808 SF of private event space.

Approximately 2,000 SF of patio space with frontage on Peachtree Road and additional indoor/outdoor shared patio next to entrance.

Ample parking.

Distinct character and notable architectural features as a starting point for repositioning





HEALEY
WEATHERHOLTZ
PROPERTIES

For more information, please contact:

Coleman Weatherholtz
coleman@hwproperties.com
(404) 219-7093
www.hwproperties.com

©2023 Healey Weatherholtz Properties.

All rights reserved. All information contained herein is from sources deemed reliable;
however, no representation or warranty is made to the accuracy thereof.